

# MAJOR POLITICAL PARTIES

---

ORIGINS, PLATFORMS & STRUCTURES

# DEMOCRAT ORIGINS

## (DEM)

First Democrat U.S. President: Andrew Jackson (1829 - 1837)

### Our Party

Since 1848, the Democratic National Committee (DNC) has been the heart of the Democratic Party, the oldest continuing political party in the United States.

Today, we are millions of supporters strong, leading with our values, fighting for progress, and helping elect Democrats in every state, city, and ZIP code—from local offices to the Oval Office. Our party's strength lies in advancing our [Democratic platform](#) and forging positive solutions that include everyone. As Democrats, we believe every person in this nation deserves to be treated with dignity and respect. We believe that health care is a right for all and that the hard work of middle-class families should be rewarded. We believe our schools and streets should be free from gun violence and that a woman's decisions about her own body are hers to make. At the DNC, we are working together to build a bright future for everyone. We are fighting for the soul of our country, the heart of our democracy, and America's place as the land of opportunity for all.



# REPUBLICAN ORIGINS

## “Grand Old Party” (REP or GOP)

First Republican U.S. President: Abraham Lincoln (1861 - 1865)

### WHO WE ARE

Initially united in 1854 by the promise to abolish slavery, the Republican Party has always stood for freedom, prosperity, and opportunity. Today, as those principles come under attack from the far-left, we are engaged in a national effort to fight for our proven agenda, take our message to every American, grow the party, promote election integrity, and elect Republicans up and down the ballot. The principles of the Republican Party recognize the God-given liberties while promoting opportunity for every American.

# POLITICAL PARTY FACTS

- The first U.S. President, George Washington (1789 - 1797) was vehemently opposed to political parties.
- Michigan does not require voter registration according to party, but the state's primary elections are partisan (Democrat or Republican) and open to all voters.

# DEMOCRAT NATIONAL COMMITTEE (DNC)

- headquartered in Washington, D.C.
- **establish and promote the policy, goals and principles in the national party platform**
- increase membership, fundraise, support Democrat elected officials, recruit new candidates and assist campaigns
- organize and operate the Democrat National Convention each presidential election year

**370 base members (plus up to 75 appointees):**  
membership is detailed in DNC Bylaws & Charter Article 3

[www.democrats.org](http://www.democrats.org)

# REPUBLICAN NATIONAL COMMITTEE (RNC)

- headquartered in Washington, D.C.
- **establish and promote the policy, goals and principles of the national party platform**
- increase membership, fundraise, support Republican elected officials, recruit new candidates and assist campaigns
- organize and operate the Republican National Convention each presidential election year

**168 members (3 from each of the 50 states and 6 territories):**

national committeeman, national committeewoman and state (or territory) party chair

[www.gop.com](http://www.gop.com)

# PARTY COMMITTEE LEVELS IN MICHIGAN

## **Top Level: State Committee**

- “umbrella organization”

## **Mid-Level: Congressional District Committees**

- one per congressional district
- 13 congressional districts (2020 census results)

## **Low Level: County Executive Committees**

- one per county with exception of Wayne County
- Wayne has a committee for each congressional district portion



Promote the Democrat platform, build party membership, recruit candidates, fundraise, host state conventions, etc.

**[MichiganDems.com](http://MichiganDems.com)**

## **MICHIGAN DEMOCRAT PARTY (MDP or MIDEMS)**

- Chair
- 2 Vice Chairs
- National Committee Members
- Secretary, Corresponding Secretary, Treasurer and such other officers as in the committee's judgment may be proper
- Congressional District Members (at least 4 from each district, allocated according to election results for party nominee for U.S. President or MI Secretary of State)





Promote the Republican platform, build party membership, recruit candidates, fundraise, host state conventions, etc.

**[MichiganRepublicanParty.com](http://MichiganRepublicanParty.com)**

## **MICHIGAN REPUBLICAN PARTY (MRP or MIGOP)**

- Chair, Co-Chair
- 6 Vice Chairs: Administrative, Coalitions, Ethnic, Grassroots, Outreach, Youth
- National Committeeman, National Committeewoman
- Secretary, Treasurer, General Counsel, Finance Chair, President of the Republican Women's Federation of MI, Chair of the County Chair Advisory Committee
- Congressional District Members (Chair and 6 others from each district)



**Who are the Democrat state party officers? How can you reach them?**

**Chair:**

---

**Vice Chairs:**

---

---

---

---

**National Committee Persons:**

---

---

---

---



**Who are the Republican state party officers? How can you reach them?**

**Chair:**

---

**Co-Chair:**

---

**National Committeeman:**

---

**National Committeewoman:**

---



**Who are the Republican state party officers? How can you reach them?**

**Administrative Vice Chair:**

---

**Coalitions Vice Chair:**

---

**Ethnic Vice Chair:**

---

**Grassroots Vice Chair:**

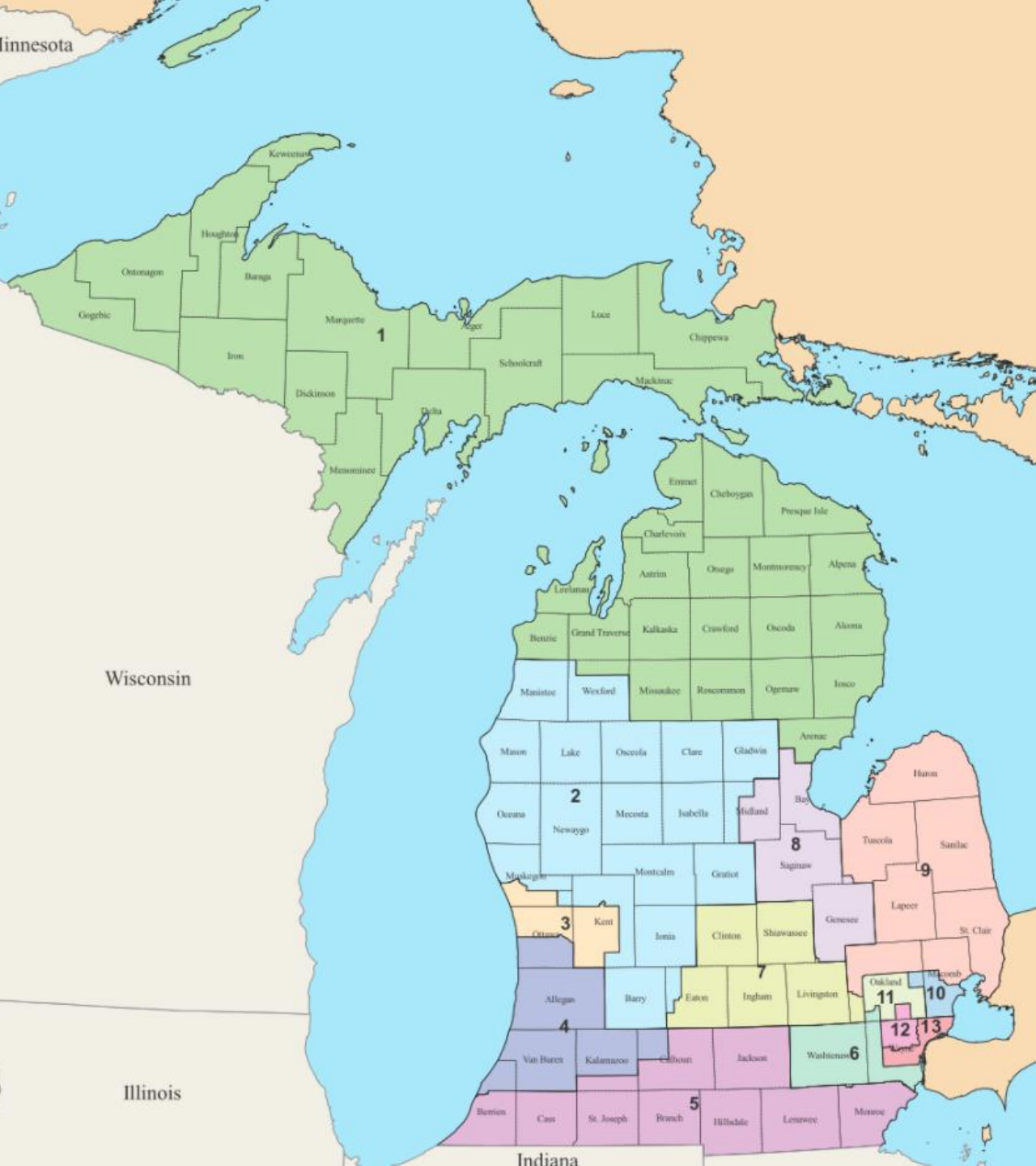
---

**Outreach Vice Chair:**

---

**Youth Vice Chair:**

---



# CONGRESSIONAL DISTRICT COMMITTEES

- Chair, Vice Chair, Secretary, Treasurer
- 15 additional members
- State Committee members (detailed on previous slides)



**Who are the influential members in your Democrat district party? How can you reach them?**

**Chair:**

---

**State Committee Members:**

---

---

---

---

---

---



**Who are the influential members in your Republican district party? How can you reach them?**

**Chair:**

---

**State Committee Members:**

---

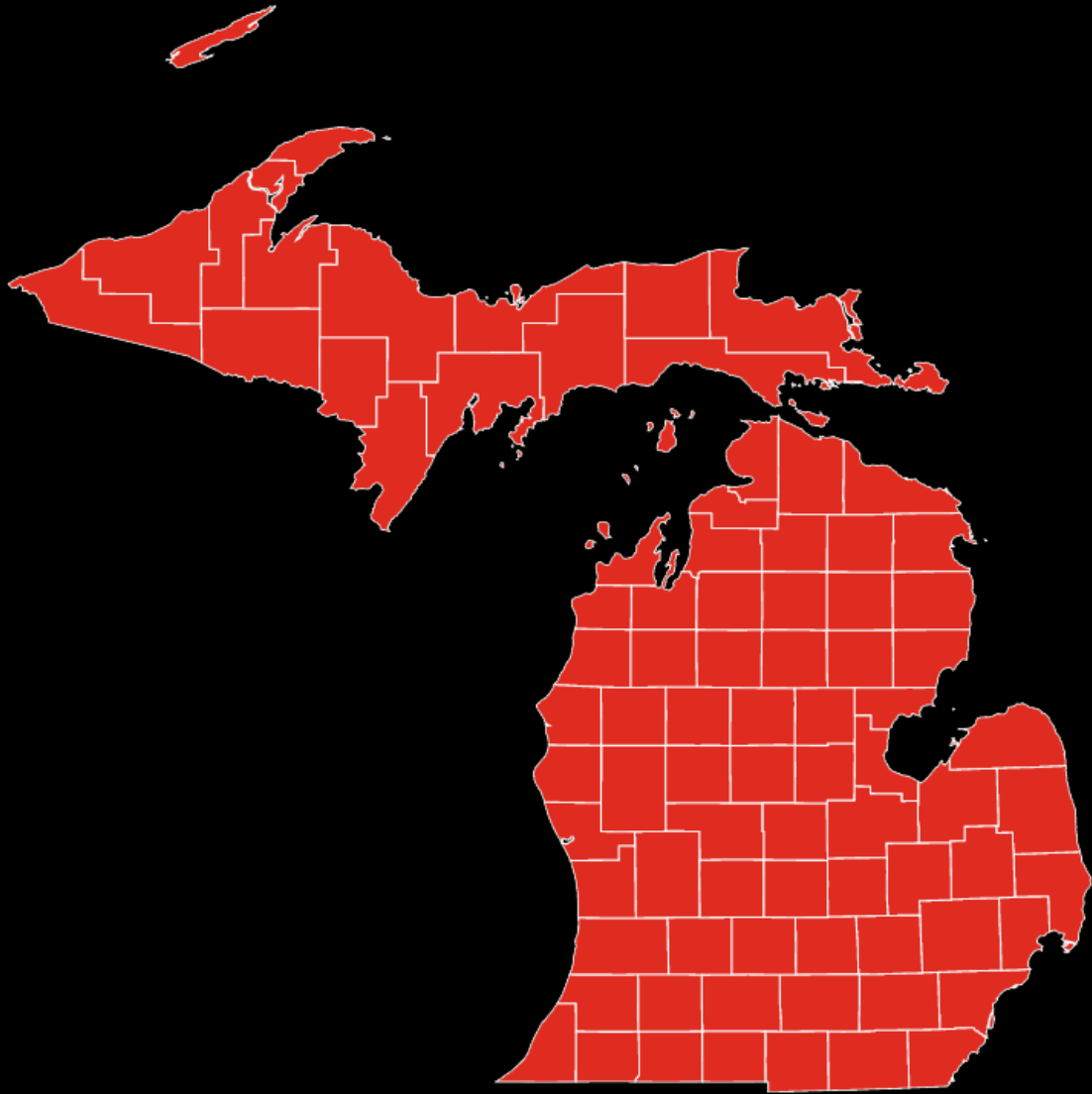
---

---

---

---

---



# COUNTY EXECUTIVE COMMITTEES

- Statutory Members
- Elected Members

Promote the party platform, build party membership, recruit candidates, fundraise, host county conventions, etc.



# STATUTORY MEMBERS

**All party candidates for county or state legislative offices who won in the most recent primary election for those seats**

Examples: State senator, state representative, county clerk, county treasurer, county sheriff, county commissioner, etc.

# ELECTED MEMBERS

**Elected every two years by precinct delegates at November county conventions in even-numbered years**

The number of delegate-elected members must be at least equal to the number of statutory members, but party bylaws can prescribe otherwise. The Michigan Democrat Party Bylaws (2018) prescribe the election of twice the number of statutory members.

Vacancies in elected committee membership are filled by majority vote of the existing elected committee members.

30 days after county convention, statutory members and elected members together elect officers for the executive committee: chair, vice chair, secretary, treasurer, and any other officers prescribed in the party bylaws.



**Who are the influential members in your county party? How can you reach them?**

**Chair:**

---

**Vice Chair:**

---

**Secretary:**

---

**Treasurer:**

---

**Other Members:**

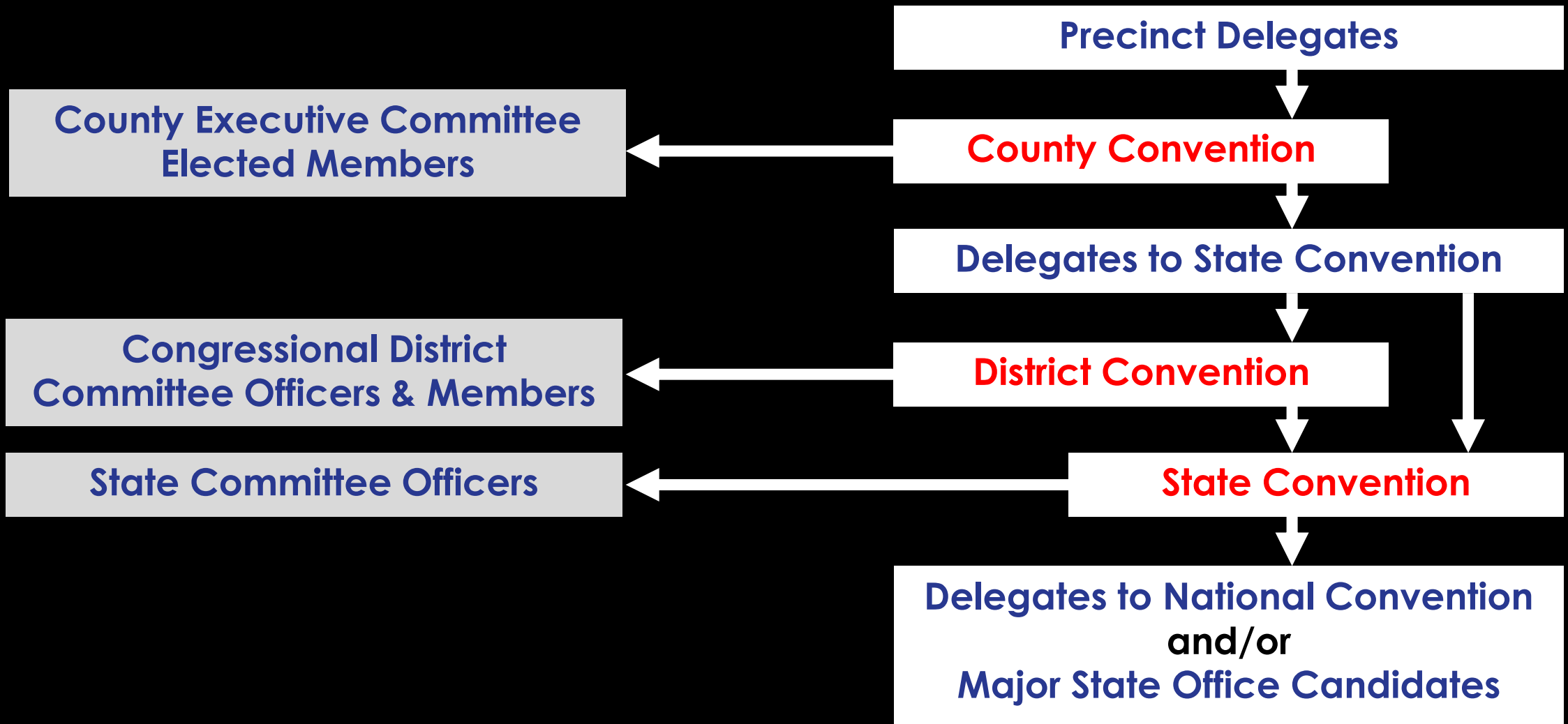
---

---

---

---

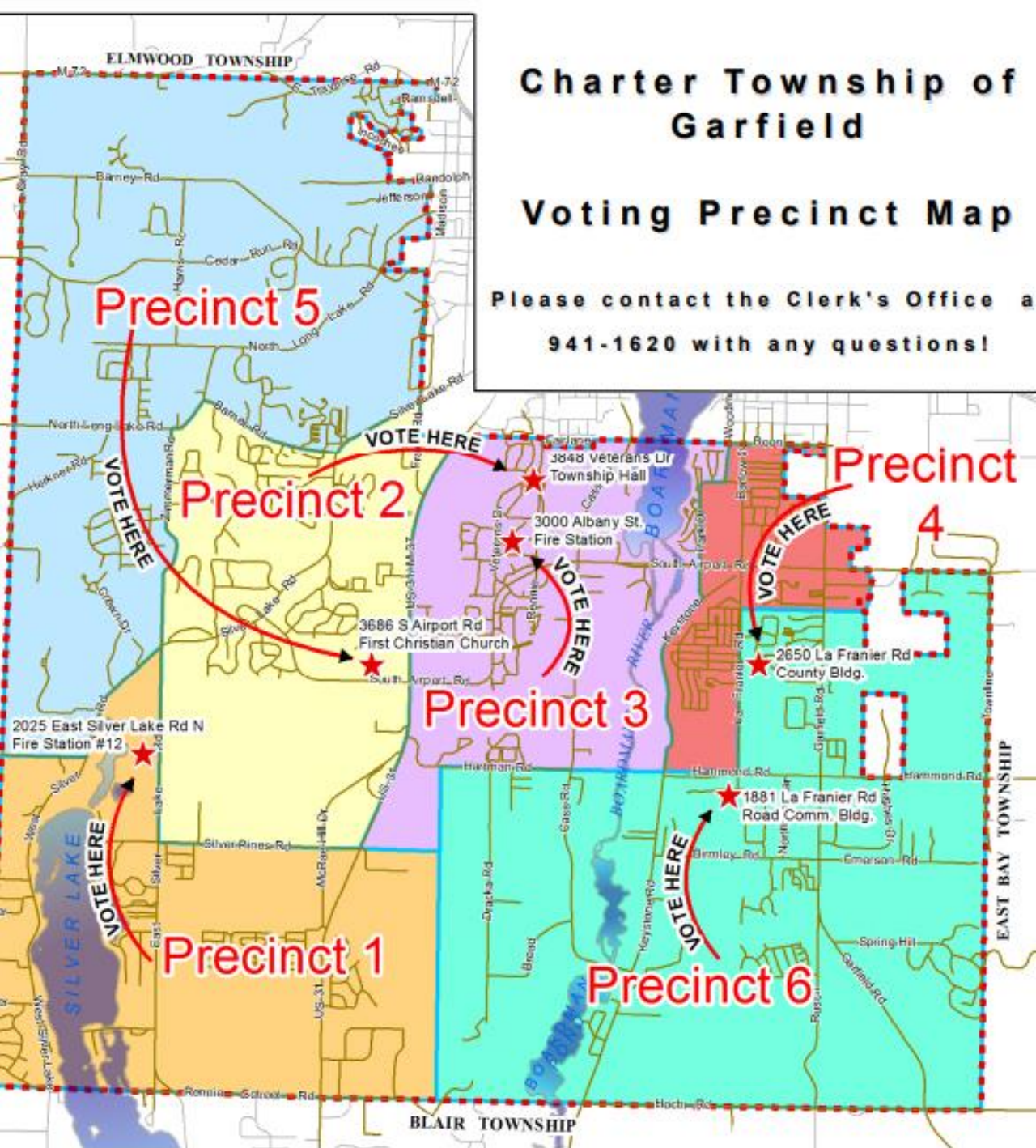
# ELECTION OF PARTY COMMITTEES AT CONVENTION



# PRECINCT DELEGATES

**Official Title: Delegate to County Convention**

Precinct delegates are elected every two years by voters in their precinct at the August primary election in even-numbered years



# PRECINCTS

- smallest geopolitical unit
- each municipality (city or township) consists of multiple precincts
- per Michigan law, no more than 5,000 active registered voters per precinct (MCL 168.658 amended in 2023 from 2,999 registered voters to 5,000)
- all voters within a precinct vote at the same polling location
- at least one delegate per precinct

# PRECINCT DELEGATE ALLOTMENT

- precinct delegate allotment for each precinct is decided by the county party chair
- submitted to county clerk before April 1 in even-numbered years
- calculated proportionally based on the past election results for the party's nominee for U.S. President or Michigan Secretary of State

## DIVISOR OF 500...

|            |             |             |
|------------|-------------|-------------|
| Precinct 1 | 1,500 votes | 3 delegates |
| Precinct 2 | 1,000 votes | 2 delegates |
| Precinct 3 | 500 votes   | 1 delegate  |

## DIVISOR OF 250...

|            |             |             |
|------------|-------------|-------------|
| Precinct 1 | 1,500 votes | 6 delegates |
| Precinct 2 | 1,000 votes | 4 delegates |
| Precinct 3 | 500 votes   | 2 delegates |



**Obtain the Republican and Democrat precinct delegate list(s) and list of delegate allotments per precinct from your county clerk. What is the current Republican and Democrat delegate allotments for your precinct?**

---

**Who are the Republican and Democrat delegates in your precinct? How can you reach them?**

---

---

---

---

---

---

---

---

---

---